

2018

PHAETON®



MADE TO MOVE YOU





SHOWN 40 IH FLOOR PLAN WITH MOCHA CABINETS & STERLING INTERIOR

2018 | PHAETON



SHOWN 40 1H FLOOR PLAN WITH WHITE MAHOGANY EXTERIOR

LOVE EVERY MILE. LIVE EVERY MOMENT.

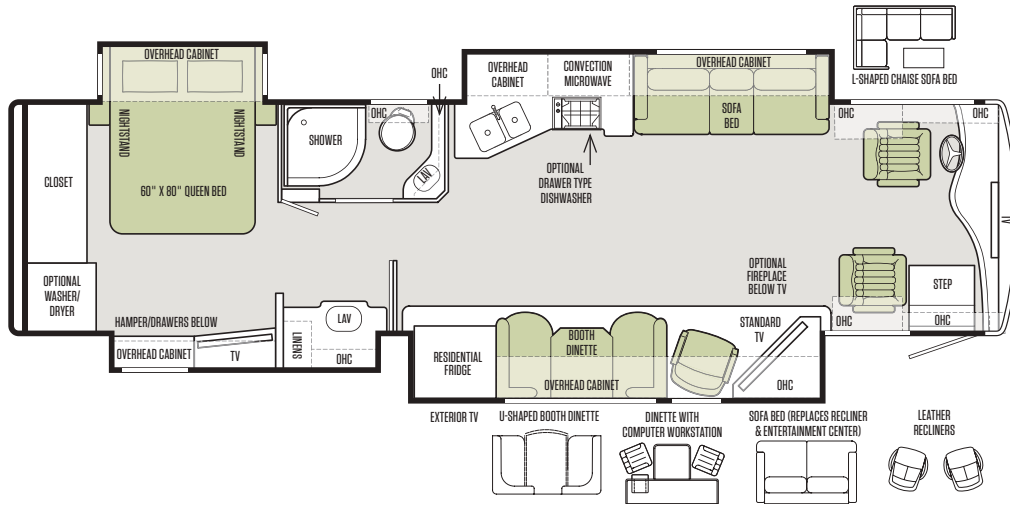
What makes the 2018 Phaeton so inviting? Could it be the balance of desired features and inspired design, of comfort and convenience, of spacious rooms and attention to detail? As one of the best-selling Class A diesel pushers, the Phaeton is a tremendous value, offering many luxuries as standard features. Every square inch is engineered to deliver an exhilarating travel experience. So, no matter which way you're going, fun is sure to follow.

FEATURES & OPTIONS

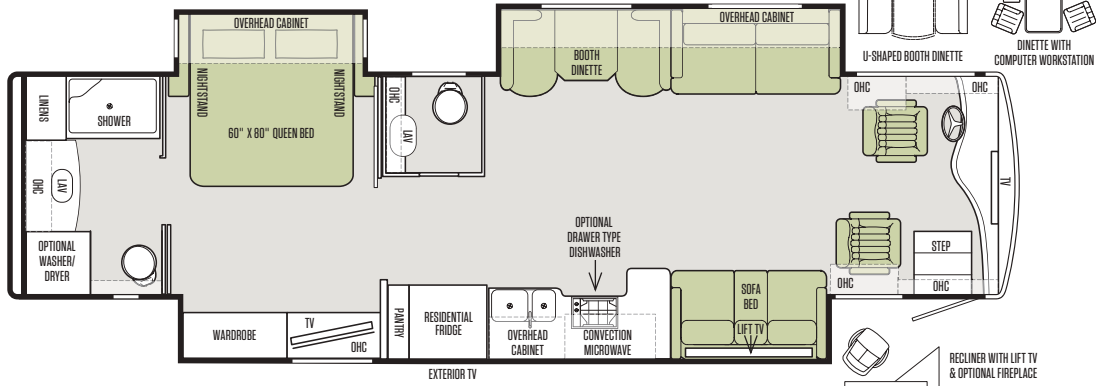
- Aluminum Wheels
- Lockable Swing-out Storage Doors with Gas Shocks
- Metal-wrapped Automatic Patio Awning
- Motion Sensor Lighting for Exterior Storage
- 10.0 kw Onan® Manual Slide-out Generator
- Exterior Flat Panel TV
- Porcelain Tile Floor Design
- Central Vacuum Cleaner
- Solid Wood Cabinet Fascias & Doors
- Home Theater Sound System
- Stainless Steel Residential Refrigerator
- Ultra Leather Furniture

FLOOR PLANS

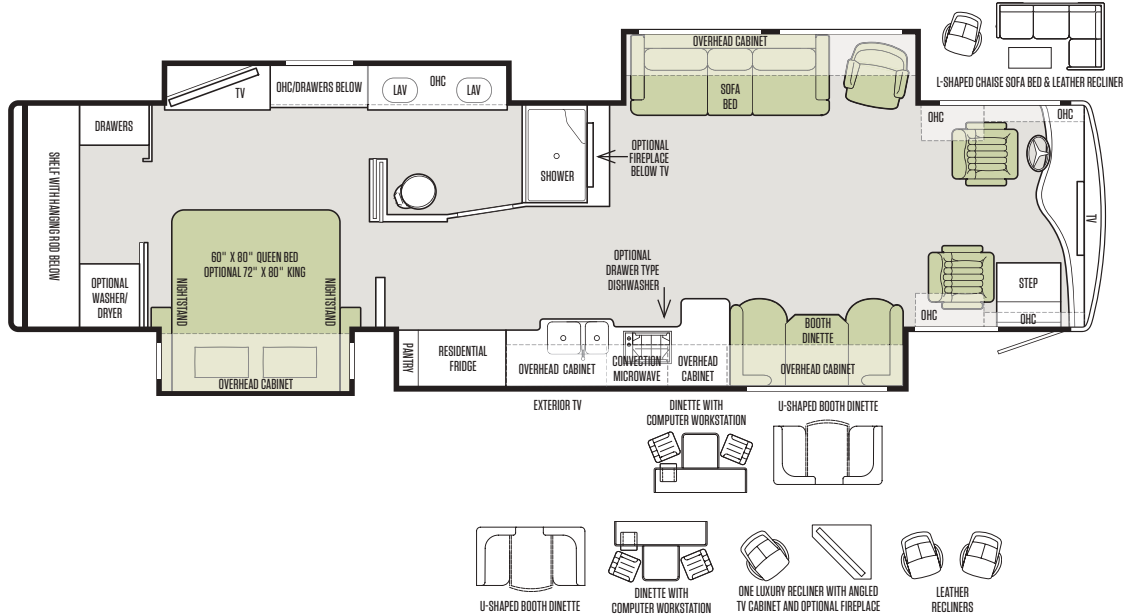
36 GH



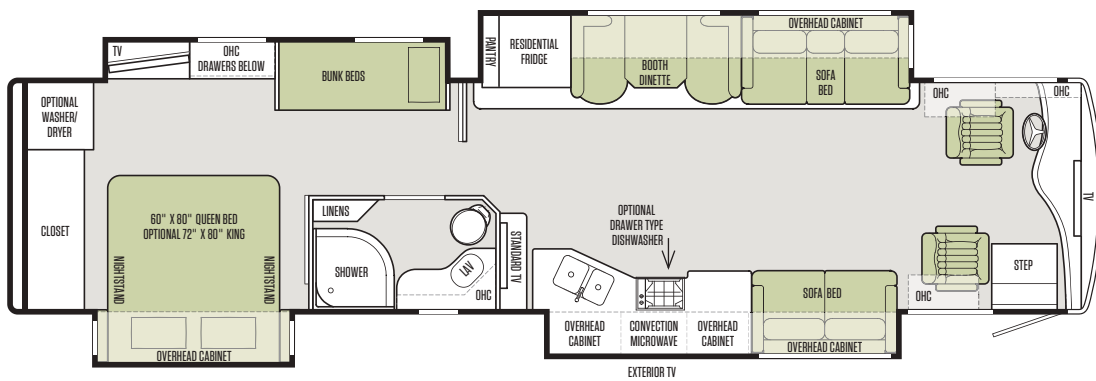
37 BH



40 AH



40 QKH

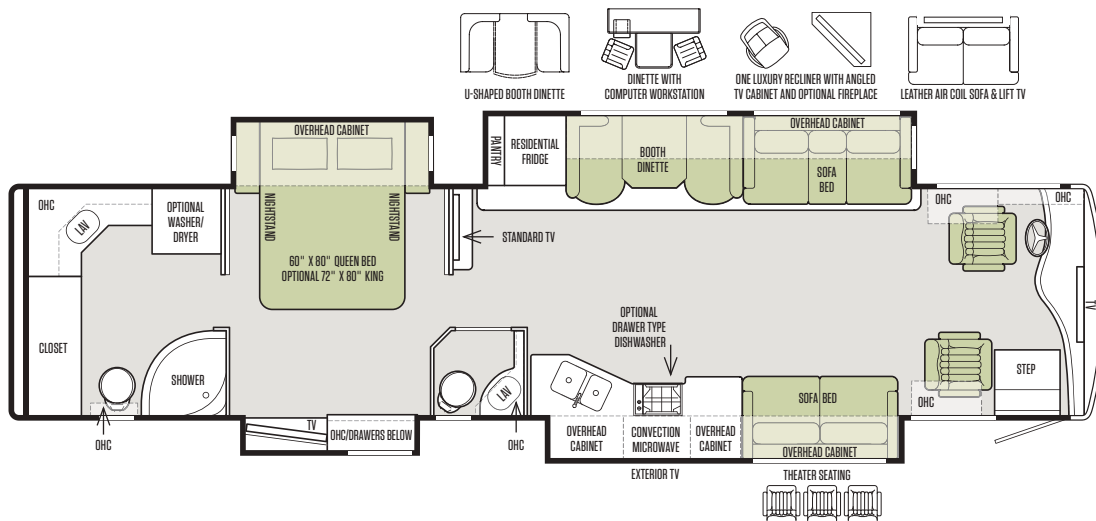


Thoughtful in every detail and in every dimension.



The design of every Tiffin floor plan must meet four essential criteria: **Maximum space.** **Optimal organization.** **Relaxation plus.** **Elegant atmosphere.** **MORE** plans offer your family the most comfortable layout for life on the road.

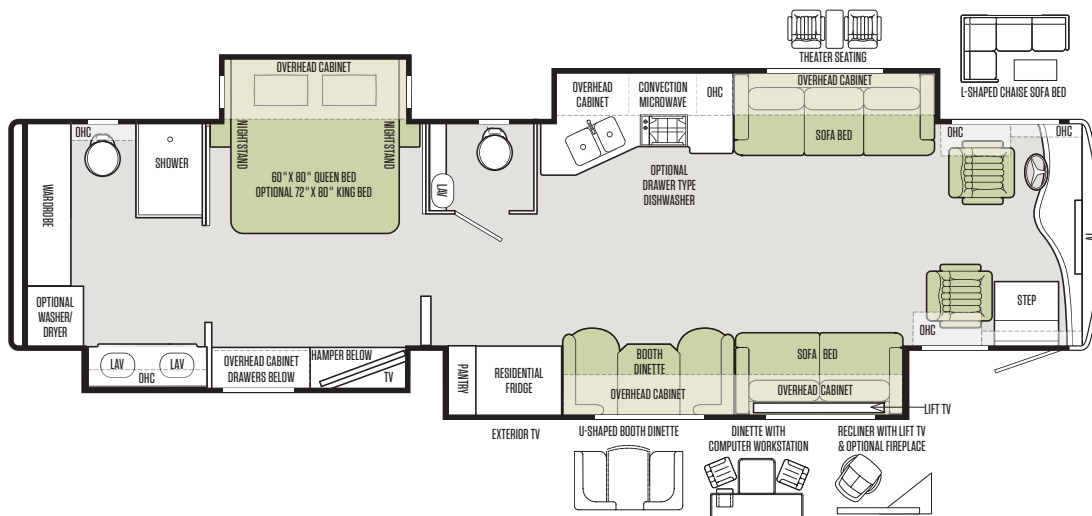
40 QBH



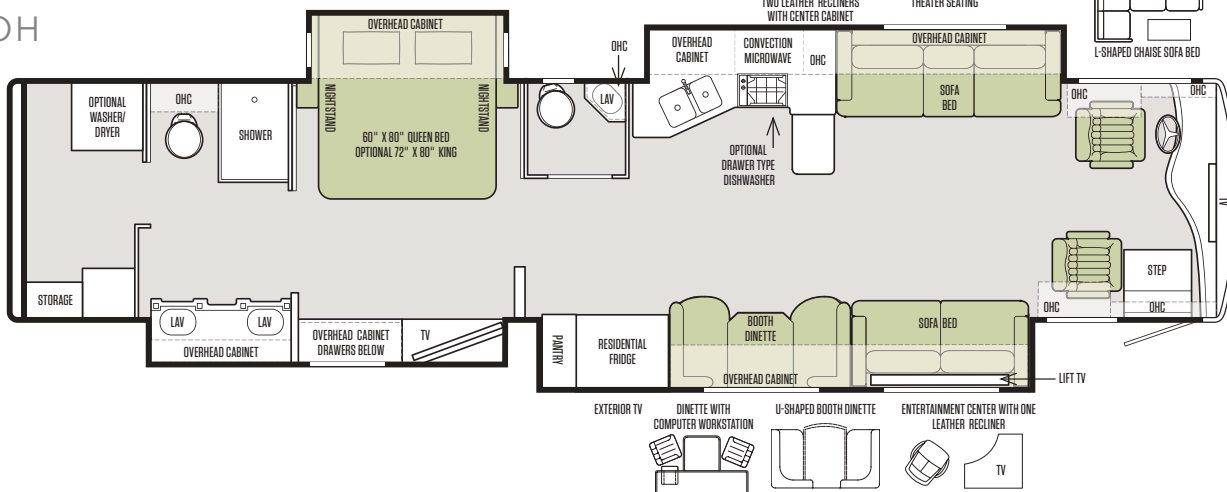
Available Only on the Phaeton 40 IH & 44 OH

Built on a Tiffin PowerGlide® chassis seamlessly integrated with the coach body, means one-stop Tiffin service for both coach and chassis. It carries an impressive warranty: Three years or 50,000 miles against structural defects in materials and workmanship on the chassis, drive train, and suspension. Five years or 100,000 miles for Cummins engine, and five years or 200,000 miles on Allison transmission.

40 IH



44 OH



Note: Standard Living Area/Dinette Shown for the 40 IH & 44 OH. For a complete list of options for these floor plans, see the specification listings or visit www.tiffinmotorhomes.com.

INTERIOR DÉCOR

Now it's time to personalize your coach.

1

Start with our handcrafted hardwood cabinetry available in your choice of luxury finishes:
Amber Glazed, English Chestnut or Mocha.

CABINETS



AMBER GLAZED

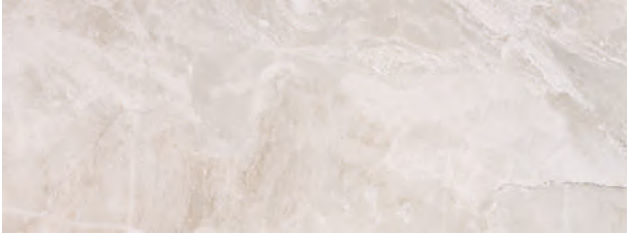


ENGLISH CHESTNUT



MOCHA

FLOORING



STANDARD TILE



CARPET

2

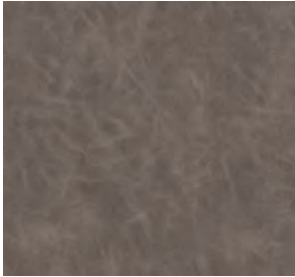
Then, add texture with your choice of designer fabric suites:
Cedar, Sterling or Tranquil.
All fabrics are treated for stain resistance.

CEDAR

LIVING AREA & KITCHEN



PILLOWS



VALANCE

KITCHEN COUNTERTOP



BACKSPLASH



STANDARD

SOFA & COCKPIT SEAT OPTIONS



MOLASSES - S



BROWN SUGAR - O



BAILEY - O

BEDROOM



INTERIOR DÉCOR

Make your experience on the road all your own. Express yourself by choosing the interior appointments such as cabinet finishes, flooring and fabric textures for every part of your motorhome. In the 2018 Phaeton you'll be able to go in style no matter where you go.

STERLING

LIVING AREA & KITCHEN



PILLOWS



VALANCE

KITCHEN COUNTERTOP

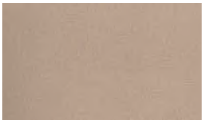


BACKSPLASH



STANDARD

SOFA & COCKPIT SEAT OPTIONS



BROWN SUGAR - S



BAILEY - O



MOLASSES - O

BEDROOM

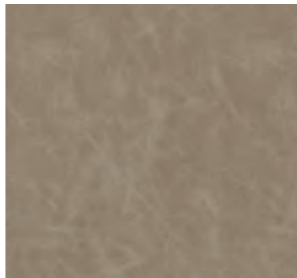


TRANQUIL

LIVING AREA & KITCHEN



PILLOWS



VALANCE

KITCHEN COUNTERTOP

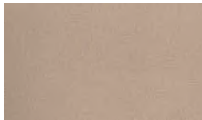


BACKSPLASH



STANDARD

SOFA & COCKPIT SEAT OPTIONS



BROWN SUGAR - S



BAILEY - O



MOLASSES - O

BEDROOM



FULL-BODY PAINT SCHEMES

PREMIUM PAINT SYSTEM

Our eight-step full-body paint system features premium grade paints sealed with four layers of superclear coat with ultraviolet protection. An additional layer of scratch-resistant plastic coating protects the front of the coach, stairwell, and entry door lock.



EMERALD SPRUCE



RUSTIC CANYON



MAROON CORAL



SUNLIT SAND



NASA



WHITE MAHOGANY

2018 PHAETON SPECIFICATIONS



AUTOMOTIVE

Standard on All Models:

- Raised Rail Chassis Frame (40 IH & 44 OH only)
- Air Ride 4 Air Bags Up to 40', 6 Air Bags on Tag Axle Units
- Four Aluminum Wheels (6 with Tag Axle)
- Exhaust Brake on 380 HP Chassis
- Compression Brake on 450 HP Chassis
- Adjustable Accelerator & Brake Pedals
- Allison 3000 MH 6-speed Automatic Transmission
- Air Brakes with Automatic Slack Adjusters & ABS
- 55" Wheel Cut (60" on the 40 IH & 44 OH only)
- Fog Lights
- Daytime Running Lights
- 18" Smart Wheel Steering Wheel
- Cruise Control
- Emergency Start Switch

CHASSIS OPTIONS

	36 GH	37 BH	40 AH	40 IH	40 QBH	40 QKH	44 OH
Freightliner Cummins ISL 380 HP/1050 lb Torque	S	S	S	NA	S	S	NA
PowerGlide® ISL 450 HP/1250 lb Torque with Independent Front Suspension	NA	NA	NA	NA	NA	NA	S
PowerGlide® ISL 380 HP/1050 lb Torque with Independent Front Suspension	NA	NA	NA	S	NA	NA	NA
GWWR	38,320 lb	38,320 lb	38,320 lb	39,600 lb	38,320 lb	38,320 lb	45,600 lb
GAWR - Front	14,320 lb	14,320 lb	14,320 lb	15,600 lb	14,320 lb	14,320 lb	15,600 lb
GAWR - Rear	24,000 lb	24,000 lb	24,000 lb	24,000 lb	24,000 lb	24,000 lb	20,000 lb
GAWR - Tag Axle	NA	NA	NA	NA	NA	NA	10,000 lb
GCWR	48,320 lb	48,320 lb	48,320 lb	49,600 lb	48,320 lb	48,320 lb	55,600 lb
Alternator Amps	160	160	160	210	160	160	210
Fuel Tank (Gallons) - Dual Fuel Fill	100	100	100	100	100	100	100
DEF Tank* (Gallons)	13	13	13	10	13	13	10

*Diesel Exhaust Fluid (DEF) is the active component used in Selective Catalytic Reduction (SCR) engines to reduce nitrogen oxide emissions by 90% to meet EPA standards.

WEIGHTS & MEASURES

Overall:

	36 GH	37 BH	40 AH	40 IH	40 QBH	40 QKH	44 OH
Overall Length (Approximate*)	38' 2"	38' 8"	41' 4"	41' 4"	41' 4"	41' 4"	45'
Overall Height with Roof Air (Maximum)	12' 7"	12' 7"	12' 7"	13' 2"	12' 7"	12' 7"	13' 2"
Interior Height	84"	84"	84"	83"	84"	84"	83"
Overall Width	101"	101"	101"	101"	101"	101"	101"
Interior Width	96"	96"	96"	96"	96"	96"	96"
Fresh Water (Gallons)	90	90	90	100	90	90	100
Black Water (Gallons)	50	50	50	55	50	50	55
Grey Water (Gallons)	66	66	66	100	66	66	100
LPG Tank (Gallons; can only be filled to 80% capacity)	35.7	35.7	35.7	35.7	35.7	35.7	All Electric
Basement Storage (Cubic Feet - Approximate)	111	122	157	232	157	157	253
Wheel Base	228"	234"	266"	266"	266"	266"	310"
Tire Size	275/80R22.5	275/80R22.5	275/80R22.5	295/80R22.5	275/80R22.5	275/80R22.5	295/80R22.5
Minimum Garage Height	13'	13'	13'	14'	13'	13'	14'
Trailer Hitch Capacity**	10,000 lb	10,000 lb	10,000 lb	10,000 lb	10,000 lb	10,000 lb	10,000 lb

*The approximated coach lengths do not include side-view mirrors and rear ladders. ** Tow ratings and ability are subject to gross combined weight ratings on the tow vehicle.

GENERAL EXTERIOR

Standard on All Models:

- Hydraulic Automatic Leveling Jacks
- Large Tinted One-piece Windshield
- Heated Power Mirrors with Integrated Cameras
- Single Motor Intermittent Wiper
- Lockable Swing-out Storage Doors with Gas Shocks
- Window Awning Package (2 Windows)
- Full-body Paint with Protective Film on Front Cap
- Remote Locking System for Entry Door
- Solid non-opening window on Passenger side
- Heated Water & Holding Tank Compartments
- Chrome Handles on Compartment Doors
- Deadbolt Front Entrance Door
- Double Electric Step
- Flush Mounted & Painted-frame Dual Pane Windows
- Exterior Patio LED Light
- Automatic Door Awning
- Metal-wrapped Automatic Patio Awning
- Motion Sensor Lighting for Exterior Storage
- 10.0 kw Onan® Manual Slide-out Generator
- Roof Ladder
- Electric Hose Reel
- Electric Power Cord Reel
- Fiberglass Front & Rear Caps
- Docking Lights
- Six 6 V Auxiliary Batteries
- Black Tank Flush System
- Water Filter
- Custom Mud Flap
- Undercoating
- Dual Fuel Fills
- 110 V Exterior Receptacle
- Digital TV Antenna
- Back-up Camera
- Cable Ready TV Hook-up
- Gravity Water Fill
- 2000 Watt Inverter with 100 Amp Converter & Transfer Switching
- Air Horns
- Exterior Flat Panel TV

Available Options:

	36 GH	37 BH	40 AH	40 IH	40 QBH	40 QKH	44 OH
One Storage Compartment Slide-out Tray	O	O	O	O	O	O	O
Two Storage Compartment Slide-out Trays	NA	NA	O	O	O	O	O
In-motion Satellite Dish*	O	O	O	O	O	O	O
Pre-wired for Winegard® TRAV'LER Satellite	O	O	O	O	O	O	O
Two Low Profile Roof ACs with Heat Pumps	S	S	NA	NA	NA	NA	NA
Three Low Profile Roof ACs	NA	NA	S	S	S	S	S
Aqua-Hot™ & All Electric Unit	O	O	O	O	O	O	S
Winegard Connect™	O	O	O	O	O	O	O
Extended Cycle Batteries	O	O	O	O	O	O	O
Vertical Slide Opening Window (PS)	O	O	O	O	O	O	O
Prep for Solar Panel	O	O	O	O	O	O	O

*High-Definition programming is not available on a domed satellite antenna unless you subscribe to DISH Network®

2018 PHAETON SPECIFICATIONS



GENERAL INTERIOR

Standard on All Models:	<ul style="list-style-type: none"> • Soft Touch Vinyl Ceiling with Trey Ceiling in Living Area • Porcelain Tile Floor Throughout Coach • Treated Carpet in Slide-outs • Central Vacuum Cleaner • Two Ducted Furnaces • LED Lighting • Solid Wood Cabinet Fascias & Doors with Concealed Hinges 	<ul style="list-style-type: none"> • Complete Cable Wiring (Interfacing with Surround Sound & Satellite System) • Home Theater Sound System with Concealed Speakers in Living Room • Direct TV® Receiver (Requires Subscription) • Solar & Privacy Shades • Fantastic® Power Roof Vents 	<ul style="list-style-type: none"> • Tank Level Monitor System • Smoke Detector • Electric Step Well Cover • Wardrobe with Automatic Light • 12 V Disconnect Switch • Extraordinaire™ AC System 					
Available Options:		36 GH	37 BH	40 AH	40 IH	40 QBH	40 QKH	44 OH
Cabinets:	Amber Glazed Solid Cabinet Doors & Drawer Fronts	<input type="checkbox"/>	<input type="checkbox"/>	<input type="checkbox"/>	<input type="checkbox"/>	<input type="checkbox"/>	<input type="checkbox"/>	<input type="checkbox"/>
	English Chestnut Solid Cabinet Doors & Drawer Fronts	<input type="checkbox"/>	<input type="checkbox"/>	<input type="checkbox"/>	<input type="checkbox"/>	<input type="checkbox"/>	<input type="checkbox"/>	<input type="checkbox"/>
	Mocha Solid Cabinet Doors & Drawer Fronts	<input type="checkbox"/>	<input type="checkbox"/>	<input type="checkbox"/>	<input type="checkbox"/>	<input type="checkbox"/>	<input type="checkbox"/>	<input type="checkbox"/>
Fabric Suites:	Cedar, Sterling, or Tranquil Fabric Suite	<input type="checkbox"/>	<input type="checkbox"/>	<input type="checkbox"/>	<input type="checkbox"/>	<input type="checkbox"/>	<input type="checkbox"/>	<input type="checkbox"/>
Leathers:	Toscana Bailey, Brown Sugar, or Molasses Ultra Leather	<input type="checkbox"/>	<input type="checkbox"/>	<input type="checkbox"/>	<input type="checkbox"/>	<input type="checkbox"/>	<input type="checkbox"/>	<input type="checkbox"/>
	Stacked Washer/Dryer	<input type="checkbox"/>	<input type="checkbox"/>	<input type="checkbox"/>	<input type="checkbox"/>	<input type="checkbox"/>	<input type="checkbox"/>	<input type="checkbox"/>
	Heated Tile Floor	<input type="checkbox"/>	<input type="checkbox"/>	<input type="checkbox"/>	<input type="checkbox"/>	<input type="checkbox"/>	<input type="checkbox"/>	<input type="checkbox"/>

COCKPIT

Standard on All Models:	<ul style="list-style-type: none"> • Power Ultra Leather Driver & Passenger Seats with Passenger Footrest • Contemporary Wraparound Dash • Courtesy Drawer in Step Well • Courtesy Light in Step Well • Front Overhead Flat Panel TV • Single CD Player & AM/FM Stereo 	<ul style="list-style-type: none"> • USB Dash Receptacle • Computer Slide-out Tray with Lock-out Rails on Passenger Side • Driver/Passenger Side Window Solar & Privacy Shades • Color Rear Vision Monitor System with Side-view Cameras Activated by Turn Signals 	<ul style="list-style-type: none"> • Power Solar & Privacy Windshield Shade • Dual Dash Fans • Two Drawers in Dash • Satellite-ready Radio Includes Receiver & Antenna (Requires Subscription) • Integrated Seatbelt Brackets • Fire Extinguisher • Dual 12 V Dash Receptacle 					
Available Options:		36 GH	37 BH	40 AH	40 IH	40 QBH	40 QKH	44 OH
	In-dash Navigation System	<input type="checkbox"/>	<input type="checkbox"/>	<input type="checkbox"/>	<input type="checkbox"/>	<input type="checkbox"/>	<input type="checkbox"/>	<input type="checkbox"/>

KITCHEN

Standard on All Models:	<ul style="list-style-type: none"> • Solid Surface Countertop with Stainless Steel Sink • Solid Surface Sink Covers • Expand-an-island • Folding Solid Surface Cooktop Cover • Sink Cover Storage Racks Underneath Sink 	<ul style="list-style-type: none"> • Single Lever Sink Faucet with Sprayer • Stainless Steel Microwave/Convection Oven • Built-in Waste Can (Not Available with Dishwasher) • Stainless Steel Residential Refrigerator 	<ul style="list-style-type: none"> • 3-burner Cooktop with Convection Microwave • Built-in Soap Dispenser • Galley Splash Guards 					
Available Options:		36 GH	37 BH	40 AH	40 IH	40 QBH	40 QKH	44 OH
	Dishwasher (Deletes Built-in Waste Can)	<input type="checkbox"/>	<input type="checkbox"/>	<input type="checkbox"/>	<input type="checkbox"/>	<input type="checkbox"/>	<input type="checkbox"/>	<input type="checkbox"/>

BEDROOM

Standard on All Models:	<ul style="list-style-type: none"> • Bed Comforter with Throw Pillows • DVD Player in Bedroom with Surround Sound • Under Bed Storage 	<ul style="list-style-type: none"> • Memory Foam Queen Mattress • Ceiling Fan • Flat Panel TV • Chest of Drawers with Laundry Hamper 	<ul style="list-style-type: none"> • Direct TV® Receiver (Requires Subscription) • Carbon Monoxide Detector • LPG Leak Detector 					
Available Options:		36 GH	37 BH	40 AH	40 IH	40 QBH	40 QKH	44 OH
	Bunk Beds with Bunk Ladder/Convertible Wardrobe	NA	NA	NA	NA	NA	S	NA
	Air Comfort Mattress - Queen (60" x 80")	<input type="checkbox"/>	<input type="checkbox"/>	<input type="checkbox"/>	<input type="checkbox"/>	<input type="checkbox"/>	<input type="checkbox"/>	<input type="checkbox"/>
	Air Comfort Mattress - King (72" x 80")	NA	<input type="checkbox"/>	<input type="checkbox"/>	<input type="checkbox"/>	<input type="checkbox"/>	<input type="checkbox"/>	<input type="checkbox"/>
	Memory Foam King Mattress (72" x 80")	NA	<input type="checkbox"/>	<input type="checkbox"/>	<input type="checkbox"/>	<input type="checkbox"/>	<input type="checkbox"/>	<input type="checkbox"/>

BATH

Standard on All Models:	<ul style="list-style-type: none"> • Medicine Cabinet with Vanity Lights • Skylight & LED Light in Shower • Solid Surface Vanity Top & Bowl 	<ul style="list-style-type: none"> • Solid Wood Custom Privacy Door • 10-Gallon DSI Gas/Electric Water Heater • Hand-held Shower Head with On/Off Switch 	<ul style="list-style-type: none"> • 3-speed Fantastic® Fan
--------------------------------	--	---	--

All options may not be available in every model. Because of progressive improvements, specifications, standard & optional equipment are subject to change without notice or obligation. For a complete & up-to-date list of available options & specifications, as well as information on Tiffin's full line of motorhomes, visit tiffinmotorhomes.com.

LIVING AREA / DINETTE

Standard on All Models: • Ultra Leather Booth Dinette/Sleeper

Available Options:

	36 GH	37 BH	40 AH	40 IH	40 QBH	40 QKH	44 OH
Ultra Leather Booth Dinette/Sleeper on Passenger Side	S	NA	S	NA	NA	S	S
Ultra Leather Recliner with Angled TV Cabinet on Passenger Side	S	NA	NA	NA	NA	NA	NA
Ultra Leather Air Coil Sofa on Driver Side	S	S	NA	S	S	S	S
Dinette with Computer Workstation on Passenger Side	O	NA	O	NA	NA	O	O
Ultra Leather U-shaped Dinette (Non-sleeper) on Passenger Side	O	NA	O	NA	NA	O	O
Ultra Leather DE Sofa/Bed on Passenger Side	O	NA	NA	S	S	NA	NA
Two Ultra Leather Recliners on Passenger Side	O	NA	NA	NA	NA	NA	NA
Ultra Leather Booth Dinette/Sleeper on Driver Side	NA	S	NA	S	S	NA	NA
Ultra Leather DE Sofa/Bed and Lift TV on Passenger Side	NA	S	NA	NA	NA	S	S
Dinette with Computer Workstation on Driver Side	NA	O	NA	O	O	NA	NA
Ultra Leather U-shaped Dinette (Non-sleeper) on Driver Side	NA	O	NA	O	O	NA	NA
Ultra Leather Recliner and Lift TV on Passenger Side	NA	O	NA	NA	NA	O	NA
Ultra Leather Air Coil Sofa on Passenger Side	NA	NA	NA	O	O	NA	NA
Two Ultra Leather Recliners on Driver Side	NA	NA	NA	NA	O	NA	NA
Ultra Leather Recliner with Angled TV Cabinet on Driver Side	NA	NA	NA	O	O	NA	NA
Ultra Leather Air Coil Sofa and Lift TV on Passenger Side	NA	NA	NA	NA	NA	O	O
Ultra Leather L-shaped Sofa on Driver Side	O	NA	NA	NA	NA	O	O
Theatre Seating on Driver Side	NA	NA	NA	NA	NA	O	O
Entertainment Center with Ultra Leather Recliner on Passenger Side	NA	NA	NA	NA	NA	NA	O
Two Ultra Leather Recliners with Center Cabinet on Driver Side	NA	NA	NA	NA	NA	NA	O
Theatre Seating on Passenger Side	NA	NA	NA	O	NA	NA	NA
Ultra Leather Air Coil Sofa/Bed and Lift TV on Driver Side	NA	NA	NA	O	NA	NA	NA
Ultra Leather Air Coil Sofa and Ultra Leather Recliner on Driver Side	NA	NA	S	NA	NA	NA	NA
Ultra Leather L-shaped Sofa and Ultra Leather Recliner on Driver Side	NA	NA	O	NA	NA	NA	NA
Fireplace with Two Ultra Leather Recliners on Driver Side	NA	NA	NA	NA	NA	NA	O
Fireplace (Only available with Ultra Leather Recliner with Lift TV or Ultra Leather Recliner with Angled TV Cabinet)	O	O	O	O	O	NA	NA
Fireplace with Ultra Leather Recliner with Lift TV on Passenger Side	NA	NA	NA	NA	NA	O	NA

*Cannot Option Air Coil Sofa on Driver Side & Passenger Side.
 *Certain Variations of Furniture Combinations will Affect Sleeping Capacity.
 *Certain Variations will Restrict Walkway Space.

The 2018 Phaeton features these Tiffin innovations:



A game-changer in RV design, these slide-outs are built as seamless fiberglass units, offering superior protection from the elements. Virtually undetectable when closed. Available only on the 40 AH and the 44 OH.



This Tiffin coach will surpass a competitor's model of equivalent size in the quantity and quality of storage.



The Tiffin Five-Star Warranty. The best in the business, bar none.

At Tiffin Motorhomes, we build for quality first and foremost, limiting our production to just 12 coaches a day to ensure meticulous craftsmanship. It may not be the most business-savvy way to run a company but it is the best way. By investing the time and effort to do things right, we want you, as a Tiffin owner, to have the utmost confidence in your coach, as well as a peace of mind you won't find with other manufacturers. You see, not only do we stand proudly behind our product, we stand behind you as well.

★ **10**
YEAR
CONSTRUCTION
WARRANTY

The structural integrity of the welded frame of entire coach is warranted for 10 years.

★ **5**
YEAR
DELAMINATION
WARRANTY

We guarantee against all exterior fiberglass delamination or wall separation for 5 years.

★ **1**
YEAR
COMPREHENSIVE
WARRANTY

Your coach is warranted against defects in materials and workmanship for 12 months, or 12,000 miles of use.

★ **1**
YEAR
COACH ROADSIDE
SERVICES

Available through Safe Ride RV, the country's largest RV emergency road service, this program provides 24/7 access to responsive roadside and technical assistance.

★ **ONGOING
OWNER
SUPPORT**

No other motorhome company can compare with Tiffin's exceptional customer service.

Email us at service@tiffinmotorhomes.com or call: **256/356.8661**.



A FAMILY BUSINESS BUILT AROUND YOURS.

The strong relationships we've built with you, our customers, are the heart and soul of our company. Now, with social media, we can connect more than ever before. We invite you to follow us on Facebook, Twitter, Instagram, and Pinterest.

LEFT TO RIGHT: VAN TIFFIN, LEX TIFFIN,
BOB TIFFIN, TRENT TIFFIN, AND TIM TIFFIN

GO TO TIFFINMOTORHOMES.COM

Visit us on the web for more information on the 2018 Phaeton and all 2018 Tiffin Motorhomes, along with the latest product and specification updates.

FOR PARTS & SERVICE CALL **256/356.8661**

[FACEBOOK.COM/TIFFINMOTORHOMES](https://www.facebook.com/tiffinmotorhomes)

[TWITTER.COM/TIFFINMOTORHOME](https://twitter.com/tiffinmotorhome)

[INSTAGRAM.COM/TIFFINMOTORHOMES](https://www.instagram.com/tiffinmotorhomes)

[PINTEREST.COM/TIFFINMOTORHOME](https://www.pinterest.com/tiffinmotorhome)

**LAMESA REC
VAN**
LaMesaRV.com
800-496-8778

Some interior furnishings not included. Unless where noted, all content ©2018 Tiffin Motorhomes, Inc. Allegro®, Allegro Breeze®, Allegro Red®, Phaeton®, Allegro Bus®, Zephyr®, Wayfarer®, Roughing It Smoothly®, Open Road®, PowerGlide®, and Pusher® are registered trademarks of Tiffin Motorhomes, Inc. All rights reserved.